



Data Tools and Resources

Kristen Stephenson

Senior Vice President, Research and Analytics, GPEC


Ryan Jones

Economist & Data Analyst, REDC



Session Outline

- Federal
- State
- Local
- Proprietary

The image features a wide-angle landscape photograph of a desert valley. In the foreground, there are some buildings and utility poles. The middle ground shows a valley with sparse vegetation and a few structures. The background is dominated by large, rugged mountains under a clear blue sky. On the left side of the image, there is a large, stylized graphic element consisting of a light gray arrow pointing right, overlaid on a dark gray background.

Federal Data Sources

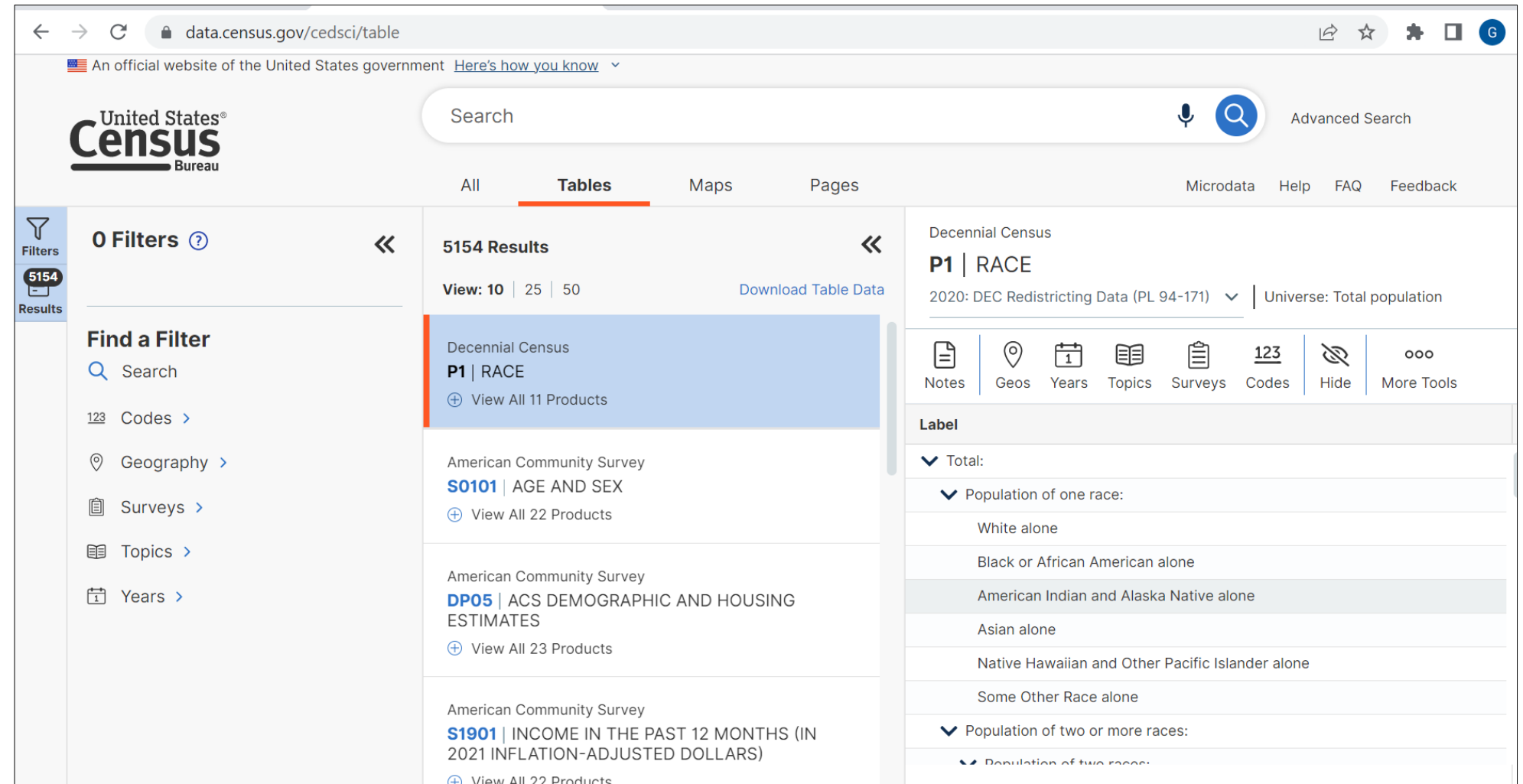
Census Data Tool

<https://data.census.gov/cedsci/>

Aggregates different
Census data surveys into
one tool

Data available for state,
region down to Census
block and tract level

Population, education,
employment, income, and
business data



The screenshot shows the Census Data Tool interface. The browser address bar displays data.census.gov/cedsci/table. The page header includes the United States Census Bureau logo and a search bar. The main content area is divided into three columns:

- Left Column (Filters):** Shows "0 Filters" and a "Find a Filter" section with options for Search, Codes (123), Geography, Surveys, Topics, and Years.
- Middle Column (Results):** Displays "5154 Results" and a list of search results. The first result is highlighted: "Decennial Census P1 | RACE" with a "View All 11 Products" link. Other results include "American Community Survey S0101 | AGE AND SEX" and "American Community Survey DP05 | ACS DEMOGRAPHIC AND HOUSING ESTIMATES".
- Right Column (Details):** Shows the selected result details: "Decennial Census P1 | RACE", "2020: DEC Redistricting Data (PL 94-171)", and "Universe: Total population". It includes a "Download Table Data" link and a "Label" section with a tree view of race categories: "Total", "Population of one race" (White alone, Black or African American alone, American Indian and Alaska Native alone, Asian alone, Native Hawaiian and Other Pacific Islander alone, Some Other Race alone), and "Population of two or more races".



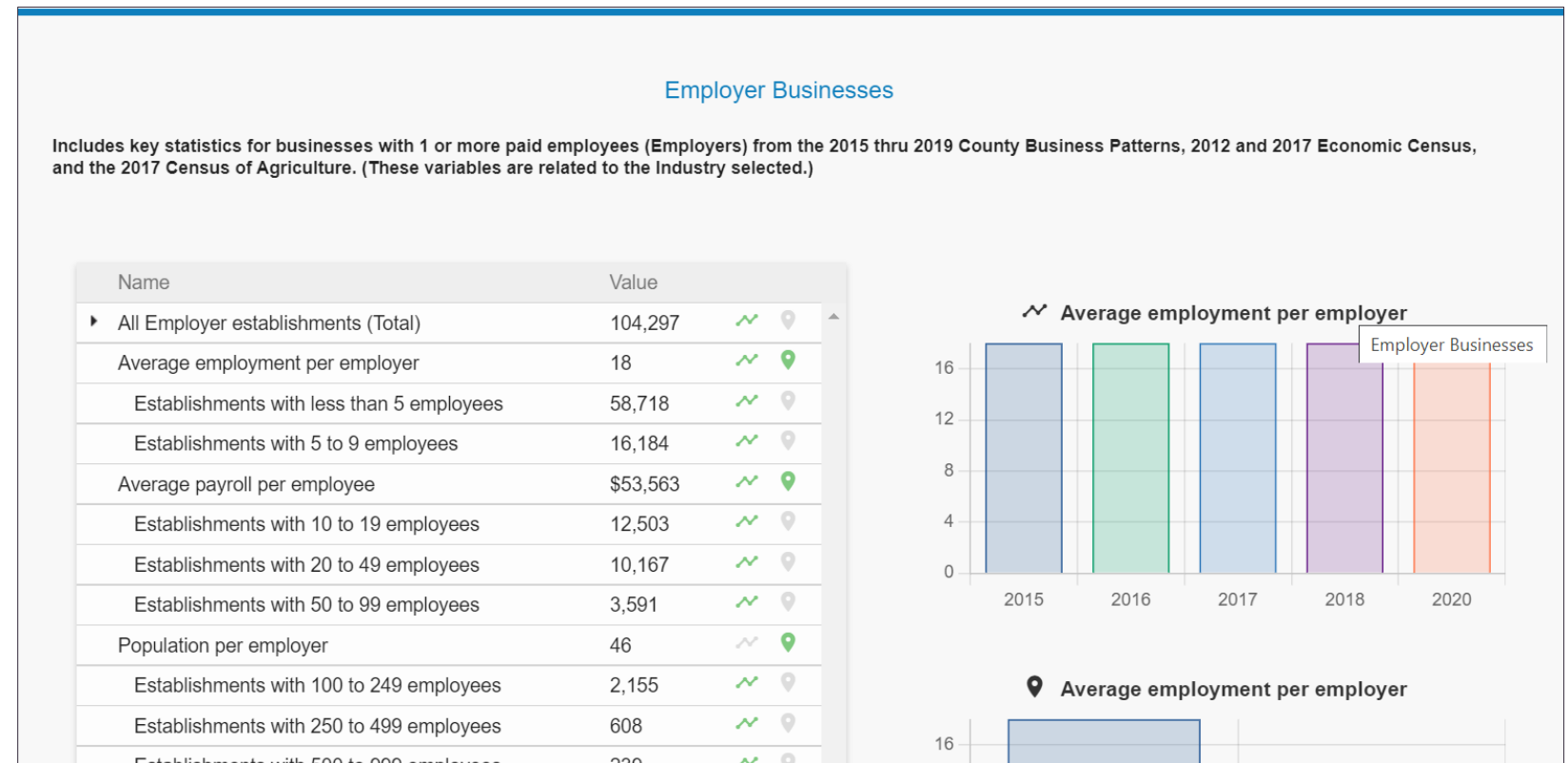
Census Business Builder

<https://www.census.gov/data/data-tools/cbb.html>

Small Business Builder: Information about specific industry by region or zip code

Regional Analysis Builder: Information about business composition in a specific geography

Designed to help business owners and regional planners understand industry in their regions



On the Map

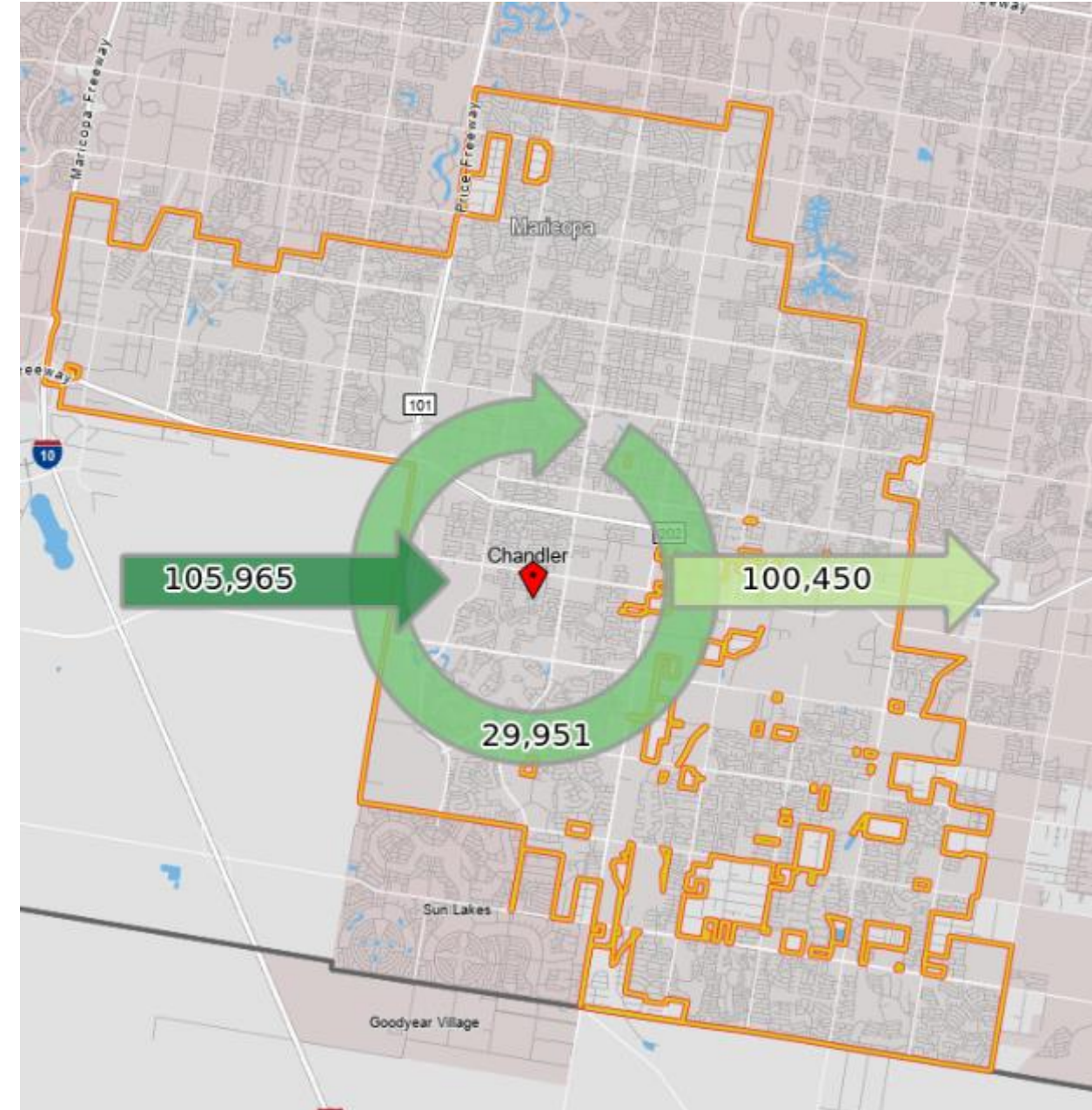
<https://onthemap.ces.census.gov/>

Inflow and Outflow employment data

Comparison between places

Distances workers travel

Can select from pre-defined geographies or create your own custom geography





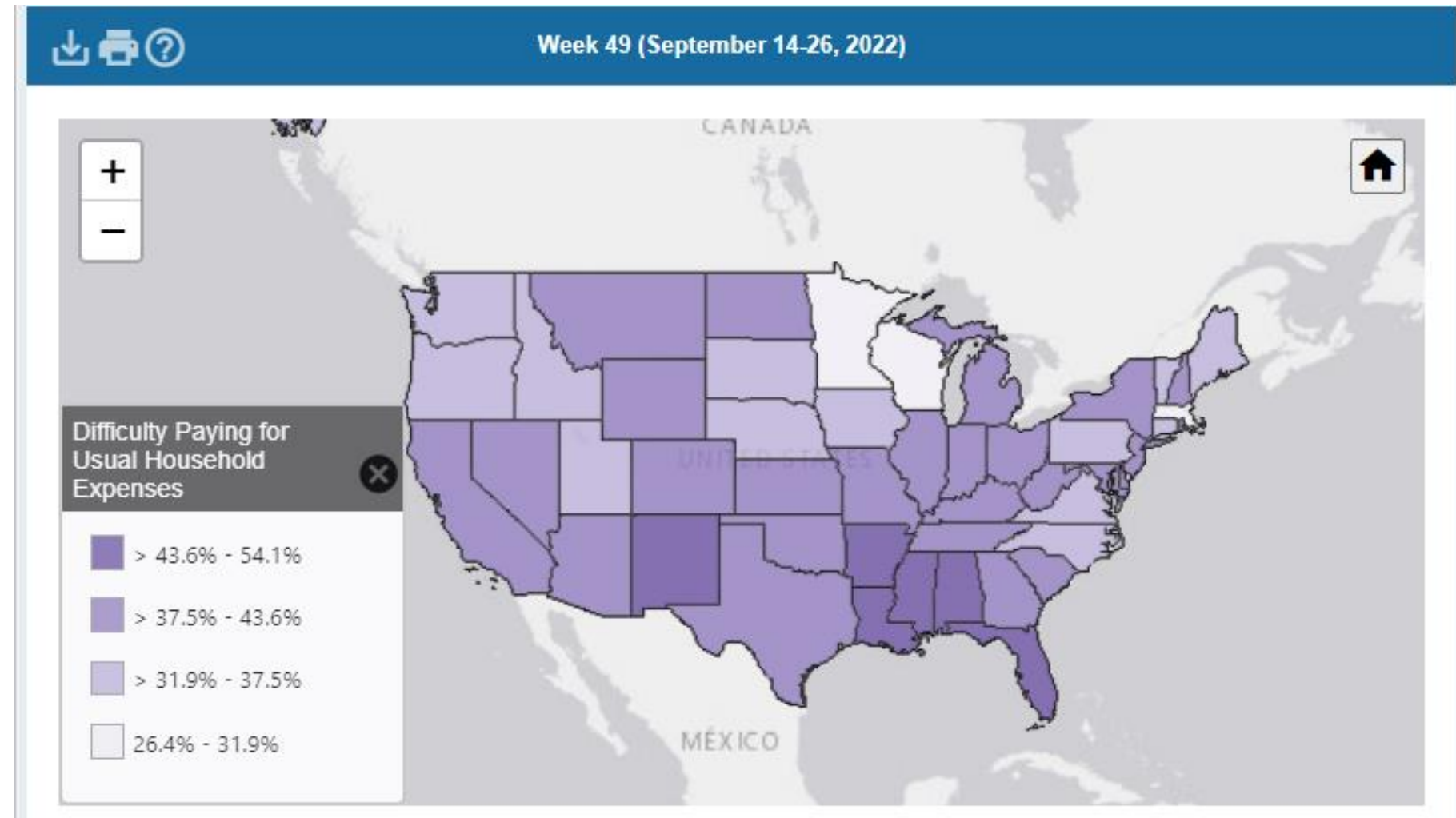
Household Pulse Survey

<https://www.census.gov/data/experimental-data-products/household-pulse-survey>

Social and economic effects of coronavirus on American households

Designed to deploy quickly and efficiently, collecting data to measure household experiences during the coronavirus pandemic

Disseminated in near real-time



Other Federal Government Sources



Collects, stores, and analyzes information, including data on the Nation's economy, population and environment
<https://www.commerce.gov/>



Gross Domestic Product, Income and Employment
<http://www.bea.gov>



Key source for occupational and industry labor market data
<http://www.bls.gov>



Easy to use aggregator for a variety of federal data
<https://fred.stlouisfed.org>

Other Federal Government Sources

Small Business Administration: Small business information for census track, city, region and state

<https://data.sba.gov/>



U.S. Small Business
Administration

Small Business Development Council: Information and resources to aid in market research and business planning. Business focused but many resources are helpful to public sector

<https://americassbdc.org/>





IRS - Migration Data

<https://www.irs.gov/statistics/>

State-to-state and county-to-county inflow/outflow of movers

State and county-level detail, no details for smaller geographies

Income estimates of movers

Raw data only, no visuals

Destination into Arizona (State Code)	Origin from			Number of returns (1)	Number of individuals [1] (2)	Adjusted gross income (AGI) (3)
	State Code	State	State Name			
04	96	AZ	AZ Total Migration-US and Foreign	134,047	250,088	11,525,589
04	97	AZ	AZ Total Migration-US	132,933	247,624	11,466,092
04	98	AZ	AZ Total Migration-Foreign	1,114	2,464	59,498
04	97	AZ	AZ Total Migration-Same State	49,233	96,319	2,698,948
04	04	AZ	AZ Non-migrants	2,469,417	5,319,756	191,353,871
04	06	CA	California	33,571	63,098	2,995,529
04	53	WA	Washington	8,024	15,066	773,053
04	48	TX	Texas	7,958	15,701	706,455
04	08	CO	Colorado	6,901	12,782	579,791
04	17	IL	Illinois	6,810	12,501	757,088
04	12	FL	Florida	4,513	7,851	358,625
04	32	NV	Nevada	4,235	7,765	280,531
04	41	OR	Oregon	4,035	7,190	358,444
04	36	NY	New York	3,555	5,929	319,330
04	35	NM	New Mexico	3,492	6,946	261,118
04	27	MN	Minnesota	3,330	5,890	358,182
04	49	UT	Utah	3,183	6,918	209,141
04	26	MI	Michigan	3,005	5,377	215,215
04	55	WI	Wisconsin	2,752	5,037	205,630
04	39	OH	Ohio	2,645	4,721	209,484
04	42	PA	Pennsylvania	2,034	3,502	241,019
04	51	VA	Virginia	1,982	3,911	205,108
04	37	NC	North Carolina	1,974	3,841	140,965
04	18	IN	Indiana	1,938	3,608	134,567



State Data Sources

Arizona Office of Economic Opportunity

www.azcommerce.com/oeo



Labor Stats: Monthly data on labor force, employment by industry, and city level unemployment rates

<https://www.azcommerce.com/oeo/labor-market/>

Population Stats: Annual population estimates for each city, population projections 3x per decade

<https://www.azcommerce.com/oeo/population/>

Forecasts: Population, labor force, jobs and industries for state, county and some regions

City-level data: available for some data, including labor force and unemployment



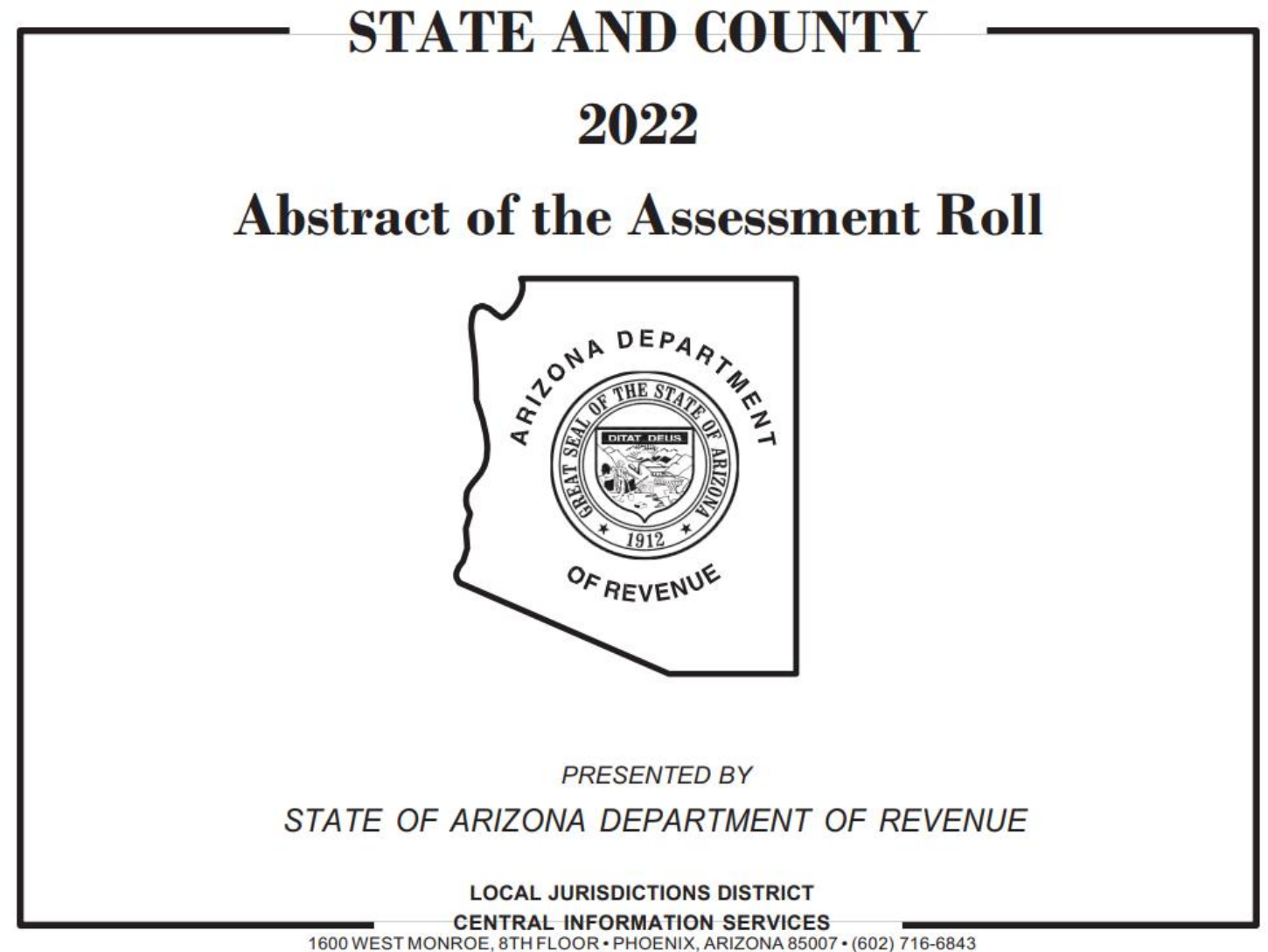
Arizona Department of Revenue

<https://azdor.gov/>

State and local transaction privilege tax (sales tax) rates for all types of sales

Property tax rates and assessed valuations for all jurisdictions

Corporate and personal income tax rates





Other Free Resources

Maricopa Association of Governments

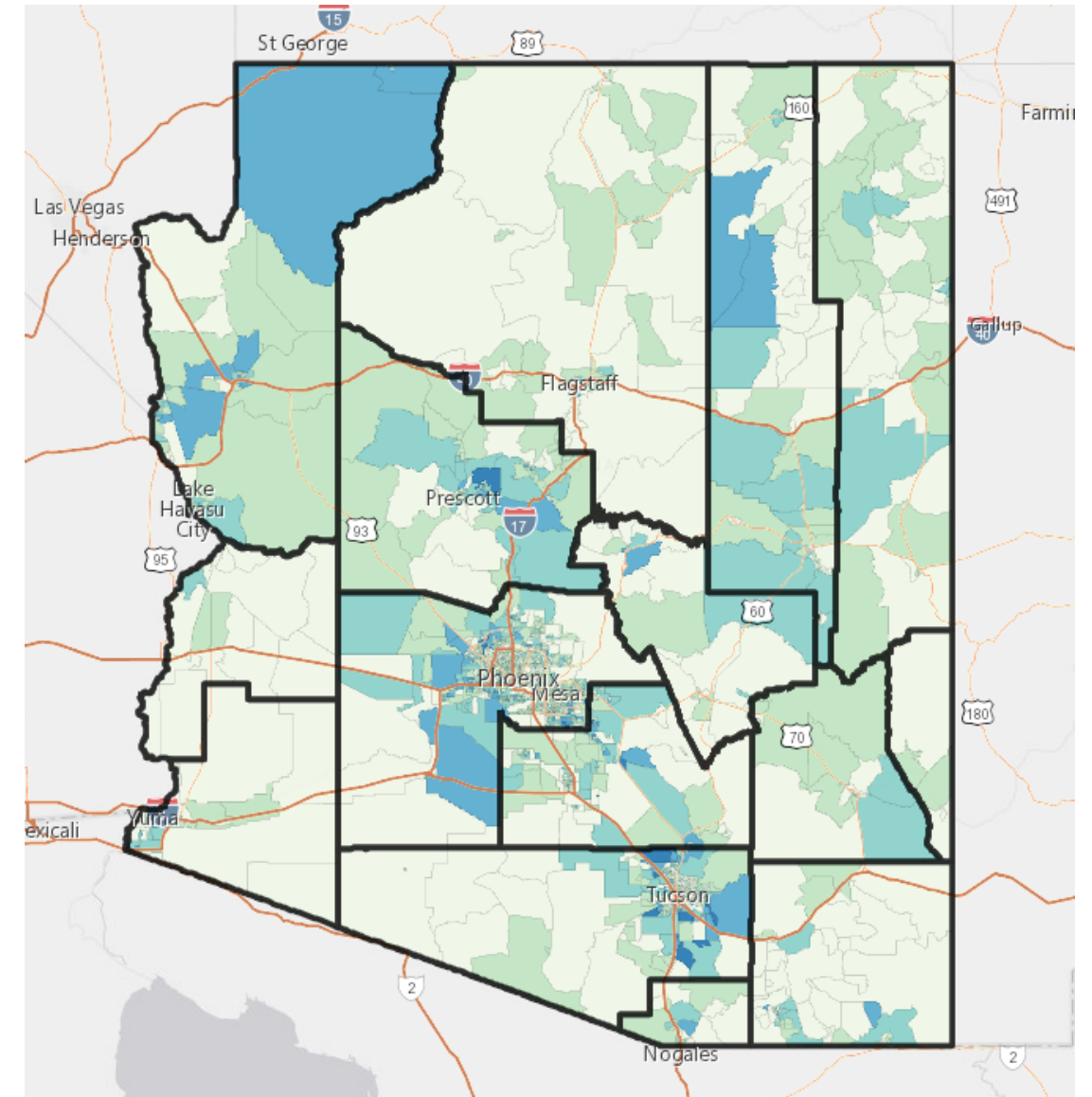
<https://maps.azmag.gov/>

Local COGs/MPOs have collaborated to provide employment data statewide

Data include locations with 5 or more employees

Reports on employment by industry down to zip code level or custom reports

Demographic data available statewide based on data from Census



APS "Arizona Prospector Tool

<https://www.arizonapro prospector.com/>

Quality infographics on demographics, education, labor force, businesses and jobs, income and spending, housing, transportation, and more

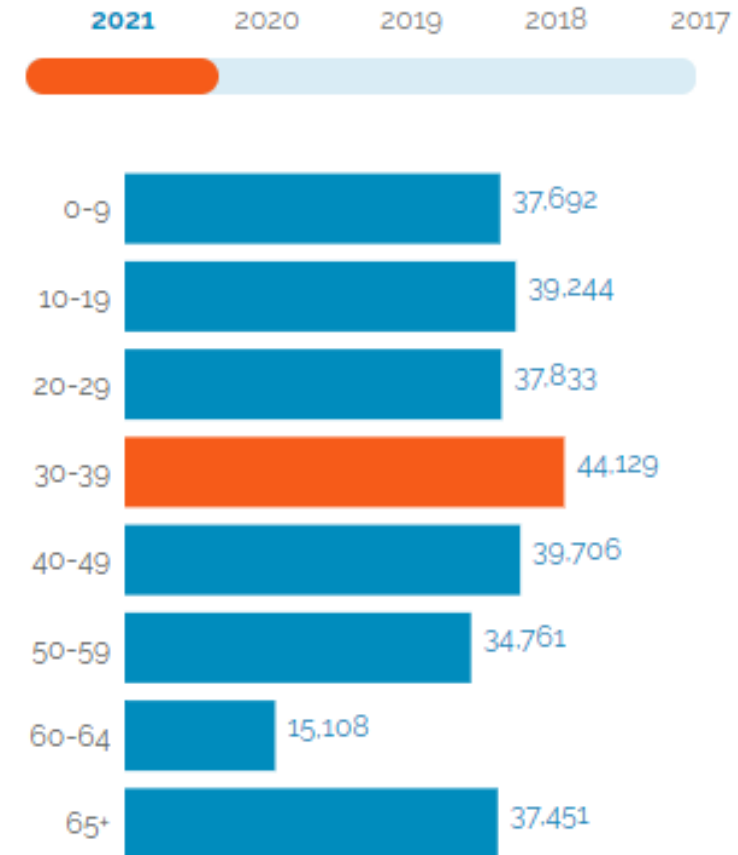
State, county, and city level data

Mapping tools for data overlays

Community comparisons across state and US



Age Distribution



Median Age

35



Proprietary Sources

Lightcast (formerly EMSI Burning Glass)

<https://lightcast.io/>

Industry and occupational statistics for custom geographies

Data products include:

- Staffing patterns
- Regional Comparison Reports
- Workforce makeup
- Job postings
- In-demand skills
- Educational data

Industry Change Summary



Region	2010 Jobs	2018 Jobs	Change	% Change	2018 Average Earnings	2018 Payrolled Business Locations
● Phoenix-Mesa-Scottsdale, AZ	197,366	258,732	61,366	31%	\$64,134	9,838
■ Dallas-Fort Worth-Arlington, TX	291,250	378,458	87,208	30%	\$66,202	21,704
▲ Denver-Aurora-Lakewood, CO	123,135	161,070	37,935	31%	\$64,273	8,742
◆ Los Angeles-Long Beach-Anaheim, CA	547,050	878,808	331,758	61%	\$56,057	260,438
+ Chicago-Naperville-Elgin, IL-IN-WI	507,116	580,818	73,702	15%	\$62,080	23,745
★ Boston-Cambridge-Newton, MA-NH	359,417	440,086	80,669	22%	\$71,699	33,356
◆ San Diego-Carlsbad, CA	121,610	172,611	51,001	42%	\$62,337	30,640

C2er

<https://www.c2er.org/>

State Incentives Database:

- Program category
- Program type
- Geography
- Business need

State Expenditures Database: Analyzes state budgets to create a consistent comparison of economic development spending across states

Quarterly cost of living comparison



Cost of Living Index (for AZ Metros)

Section 1: Urban Area Index Data
Section 2: Average Prices



COST OF LIVING INDEX

C2ER | THE COUNCIL FOR COMMUNITY AND ECONOMIC RESEARCH

COST OF LIVING INDEX		2022 Q2 Index						
METRO/MICRO	URBAN AREA AND STATE	100% COMPOSITE INDEX	17.26% GROCERY ITEMS	30.90% HOUSING	10.21% UTILITIES	7.54% TRANS-PORTATION	4.42% HEALTH CARE	29.67% MISC. GOODS AND SERVICES
Lake Havasu City-Kingman AZ Metro	Bullhead City AZ	91.5	90.9	98.4	89.8	98.6	91.1	83.4
Lake Havasu City-Kingman AZ Metro	Lake Havasu City AZ	137.2	123.5	193.3	90.1	103.0	101.2	117.1
Phoenix-Mesa-Chandler AZ Metro	Phoenix AZ	104.8	98.7	121.3	103.9	107.8	97.0	91.8
Prescott Valley-Prescott AZ Metro	Prescott-Prescott Valley AZ	117.9	101.0	146.9	90.5	108.2	94.1	113.0
Phoenix-Mesa-Chandler AZ Metro	Surprise AZ	97.7	92.9	99.2	124.7	89.6	88.5	92.9
Tucson AZ Metro	Tucson AZ	104.0	105.5	104.8	97.0	110.0	101.6	103.6
Yuma AZ Metro	Yuma AZ	95.2	99.0	86.4	106.6	95.4	103.4	97.1

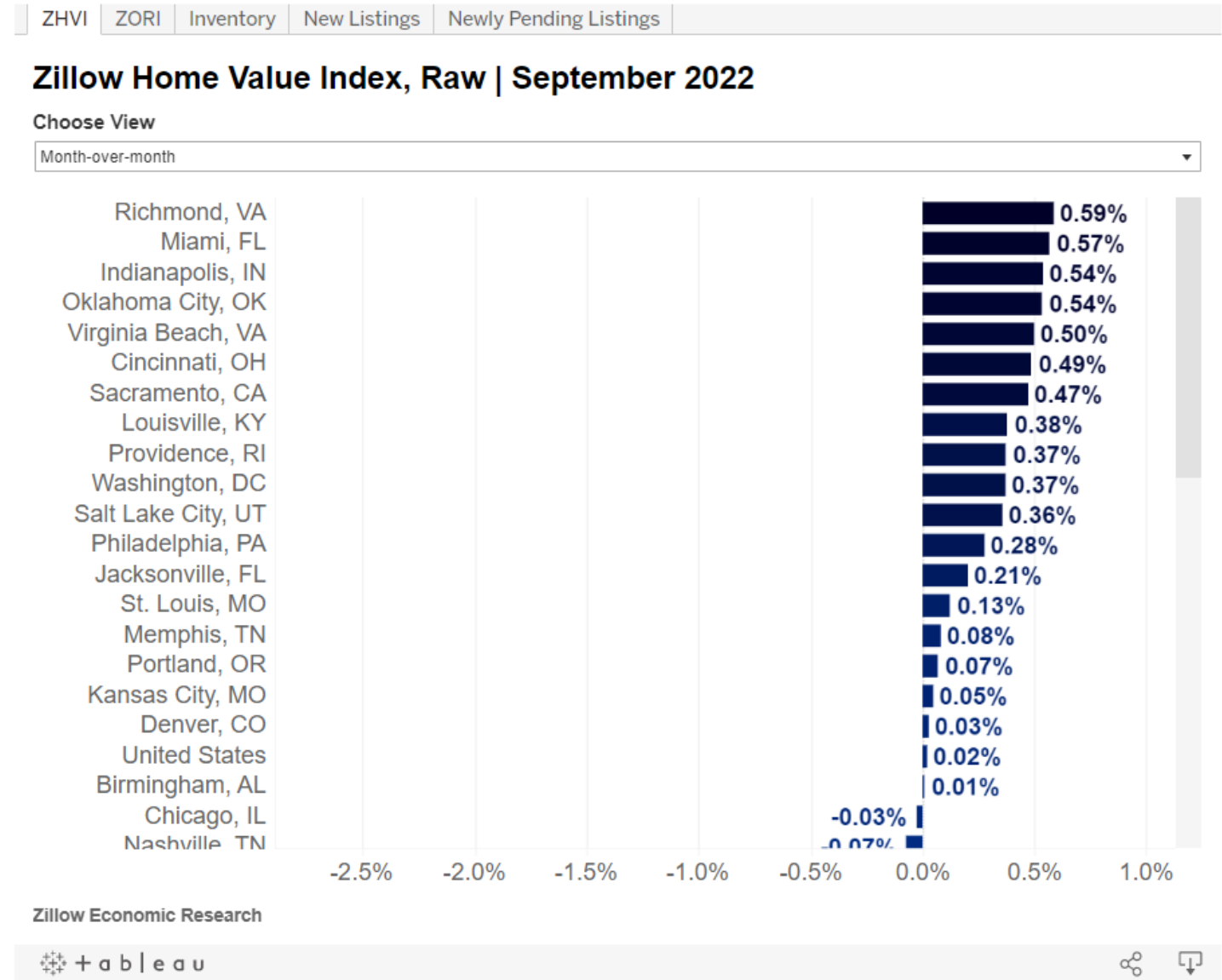
Zillow

<https://www.zillow.com/research/>

Zillow Home Value Index: Smoothed, seasonally adjusted measure of home values for metros, counties, cities, zip codes and neighborhoods

Zillow Home Value Forecast: month-ahead, quarter-ahead and year-ahead forecast of the Value Index; available for metros and zip codes

Zillow Observed Rent Index: A smoothed measure of market rent for metros, counties, cities and zip codes





Forecasting

<https://eller.arizona.edu/departments-research/centers-labs/economic-business-research>

Reliable economic data forecasts

University of Arizona Eller College of Management's Economic & Business Research Center and Forecasting Project publish forecasted data for Arizona, Phoenix and Tucson

Some forecasts and analyses are only available with a paid subscription

Arizona Forecast*	2021	2022	2023	2024	2025
Personal Income (\$ mil)	396,083.6	406,779.2	430,067.2	457,428.6	485,582.0
% Chg from Year Ago	7.5%	2.7%	5.7%	6.4%	6.2%
Retail Sales (\$mil)	148,000.0	163,000.0	167,000.0	173,000.0	181,000.0
% Chg from Year Ago	21.3%	10.1%	2.5%	3.6%	4.6%
Total Nonfarm Employment (000s)	2,958.0	3,054.6	3,112.0	3,180.4	3,245.5
% Chg from Year Ago	3.7%	3.3%	1.9%	2.2%	2.0%
Population (000s), July 1st estimates	7,285.4	7,395.4	7,505.6	7,610.2	7,714.6
% Chg from Year Ago	1.5%	1.5%	1.5%	1.4%	1.4%
Residential Building Permits (units)	65,334.0	65,291.3	59,288.3	48,115.8	46,095.6
% Chg from Year Ago	8.3%	-0.1%	-9.2%	-18.8%	-4.2%

Copyright 2022 The University of Arizona. All rights reserved.

Published by Economic and Business Research Center, The University of Arizona.

Powered by dataZoo

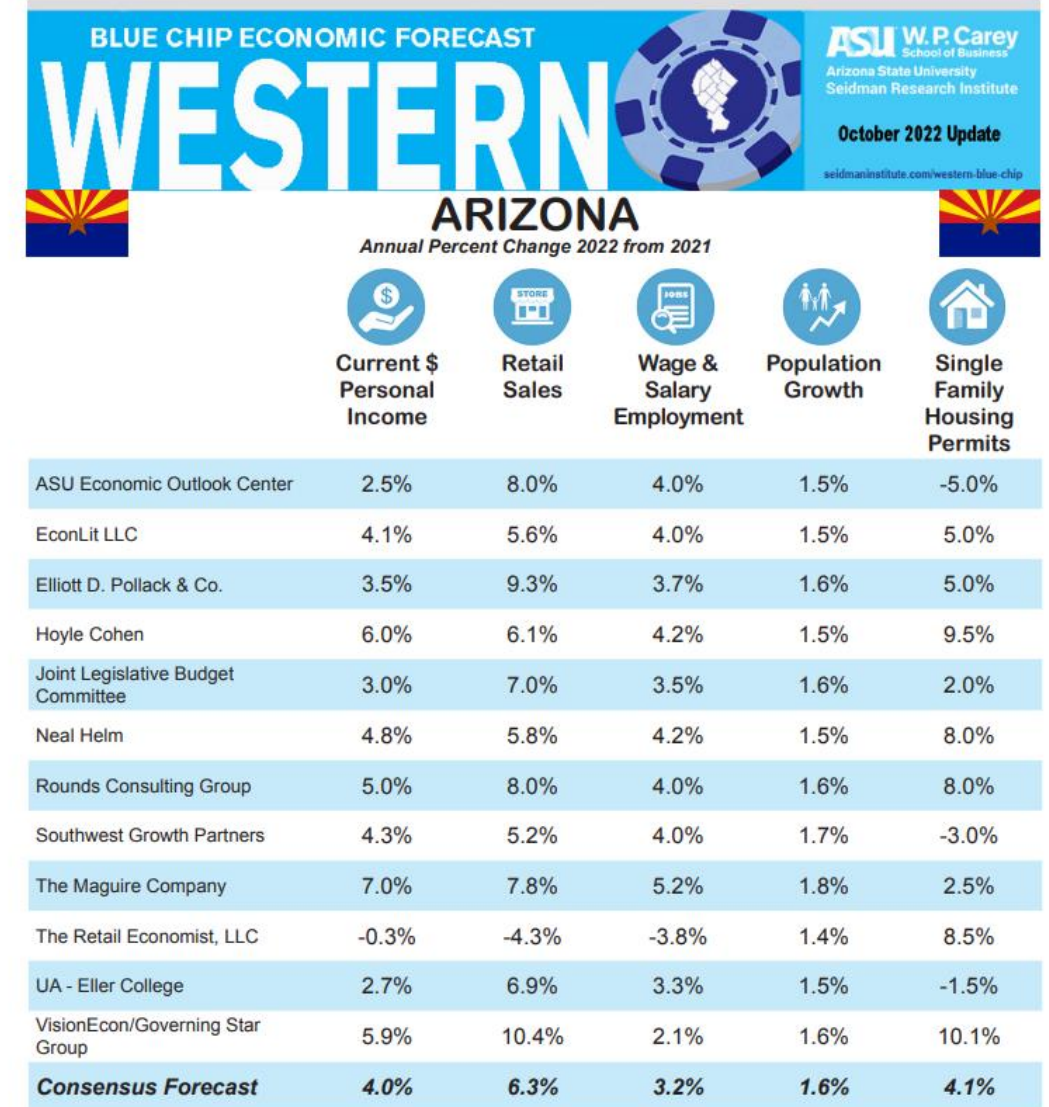
Forecasting

<https://seidmaninstitute.com/western-blue-chip/>

Blue Chip provides a consensus forecast from multiple economists

Tracks Arizona and other states in the Western United States

Current quarter and one year forward



Contact Us



**Kristen
Stephenson**

*Senior Vice President,
Research and Analytics, GPEC*

T 602.262.8605 //
kstephenson@gpec.org



**Ryan
Jones**

*Economist &
Data Analyst, REDC*

T 928.776.2363 // ryan.jones@yc.edu